



Catalogue 

INDEX

COMPANY

COMPANY	04
DISTRIBUTORS	06

INSTRUMENTS

EVENT	12
EVENT61	14
EVENT CHROM	16
FUSION	18
EVENT X	20
EVM	22
EVS	24
EVP 4	25
EVP 1	26
EVP 2	28

ACCESSORIES and AMPLIFICATION

MONITOR	31
AMPLIFICATION	32
STAND	35
POWER SUPPLY	35
PEDALS	36
HARD CASES	38
DELUXE HARD CASES	39
BAGS	40
LIBRARY & SOFTWARE	41

KETRON

BEST ORIGINAL SOUNDS

ANCONA

ITALY 



Factory

Located in the industrial area of Ancona, KETRON was established in 1981 with the mission of designing and manufacturing electronic musical instruments. In its early years, the company focused primarily on producing electronic organs. Over time, the production shifted towards lighter, more portable arranger keyboards and modules.

These instruments became a standard for solo performers in live entertainment and piano bars during the 1990s, earning widespread acclaim for their quality and exceptional durability. Staying true to its founding principles, KETRON continues its relentless pursuit of excellence in sound and arrangement quality.

Leveraging cutting-edge technology, the company creates uniquely crafted instruments tailored to meet the needs of the most demanding professionals.



MAURIZIO LEONARDI
Founder - Hardware and software manager



ALESSANDRO FONTANELLA
*Founder / Sound Designer
Research & Development*



MARCO PANNI
Sales Manager



COMPANY

KETRON

BEST ORIGINAL SOUNDS





KETRON in the world.



EVENT SERIES



EVENT



EVENT X



EVENT 61



EVENT CHROM



EVM



FUSION



EVS



EVP4



EVP1



EVP2

INSTRUMENTS

EVENT SERIES

The new State-of-the-Art Arranger Line

At KETRON we want to craft the most innovative, inspiring and original musical keyboards that can ever be produced today with the technology of tomorrow. This time we have challenged ourselves with more in-depth studies, intense experimental research and hard-working studio sessions, by involving great international musicians. We aim to offer to professionals and to the most demanding music lovers an instrument that would represent the new State-of-the-Art Arranger keyboard in the world. We did not stop until we reached the highest quality standards, so that cutting-edge technology could also generate the most realistic sounds. The result of our hard and passionate work is the EVENT product's line.

Try it out these products and experience what it means to play accompanied by a full band of real musicians. Now you can play jam sessions with a Grand Piano sound imagining a jazz trio playing behind you. If you love dance music, you can bring EVENT with you on stage: the realism of the arrangements will ensure everyone's attention in a packed lively dance floor.

Playing with an EVENT instrument is a special emotion. We are delighted to share it with you.

ARRANGER

EVENT SERIES is designed to provide easy access to the most sophisticated style architecture ever developed on an arranger keyboard. It comes with over 500 Styles, divided into Real Styles, Live Styles or MIDI Styles. The Real Styles, with their impressive authenticity, stand out thanks to the backing tracks in full audio format. Event Series features a rich manual Lower section, with three independent parts and Mono / Poly modes. You can use the new advanced Style Edit to program your new styles and save any customized configuration in the User memory.

DRUMS

The rhythm section features over 580 Real Drums and complete drum patterns with Intro, Ending, 4 Variations, Fill and Break, covering a wide variety of musical genres. Unlike other musical instruments, where the rhythmic sequences are mostly short loops controlled via MIDI, EVENT SERIES has real studio recordings of professional drummers, available in eight or more measures, without any cuts or editing. The result is incredibly smooth and natural. EVENT SERIES provides Real Drum track equalization, as well as Drum Lock mode which loops the rhythmic pattern that is being played. Furthermore, there are 94 new stereo Drum Sets: with Drum Mixer and Remap, you can reassign the individual percussion sounds and save them in one of the 32 available User Drum locations. The Groove section is outstanding, with over 700 percussive sequences, three independent Groove parts that control House, Hip Hop and Latin loops, as well as an amazing variety of Afro-Cuban, Brazilian or Latin percussion instruments, including Conga, Shaker, Maracas, Cowbell, Cajon, Tambourine and many more.

BASS

The Bass section provides a wonderful library of 256 Real Bass: bass lines that are recorded in studio by real bass players on various tones and perfectly synchronized with the rhythm of the style. It is impossible to not be carried away by the energy of these bass lines, from traditional Ballads, Soul rhythms, to Disco Funk.

The tone color, the correct finger positions on the neck and all the natural vibes of the performer give the sensation of playing with a real bassist next to you! Real Bass adapts naturally to chord changes, as if it were a normal MIDI bass, even playing To Lowest mode with the bass upside

down on the lowest note! It is very easy to switch between MIDI and Audio bass in real time (Twin Bass), modify the voice of the Real Bass using a parametric equalizer or lock the current set using the Lock Bass mode. The series of functions available for Bass such as Manual, To Lowest, To Root and Bassist are particularly refined: for example, the latter recognizes the chord by combining the notes played both on the right part and on the Manual bass part. Finally, the Multibass supports custom Bass progressions for various chords.

CHORDS

Real Chord is at the same time the most elaborate and entertaining feature of EVENT SERIES.

You can control many guitar tracks or other instruments in real time: everything can be performed on several tonalities, including all chords on the scale. More than 300 Real Chords, including a wide variety of recordings such as Folk, Jazz, Nylon, Electric guitar, and other instruments like sax, harmonica, violin, trumpet and so on, are all perfectly synchronized with MIDI into the arranger architecture.

The Real Chord features a dedicated EFX Insert with Chorus, Eq, Overdrive, Phaser, Wah and other effects.

The Real Chord pattern can be locked using the Lock Chord function to obtain "ostinato", peculiar to the Disco Funk genre. Just listen to one of EVENT SERIES Unplugged styles and get ready to be amazed by the authentic sound of a simple acoustic guitar. EVENT SERIES has also a vast library of Live Guitars (guitar loops managed by slices and controlled via MIDI), Long Chord and five MIDI chords, capable of playing simultaneously and with different voices and volume. Another noteworthy feature is the Multichord section, with piano accompaniments, strings and other orchestral parts programmed for any given tones.

MODELING

The powerful Audio Style Modeling system was engineered to offer an enormous variety of musical solutions, with the possibility of managing both the audio tracks of Real Drum, Real Bass and Real Chord and the orchestral MIDI tracks that you want to add to the arrangement. Navigation is easy and you can create new rhythmic or harmonic patterns within a few seconds. EVENT SERIES is also expandable: you can customize it by adding sounds and styles as well as audio recordings of rhythm, bass and chords.

SOUNDS

EVENT SERIES delivers premium sound quality and top-tier voices as we want to deliver the best-in-class professional arranger. 10 Sounds banks come with a brand-new acoustic Grand Piano, a series of Multilayer Electric Pianos, an incredible selection of Strings and Brass, new acoustic and electric guitars, a completely renewed series of Pad, Synth, Bass and Ethnic voices. The instrument features 2 Voice sections, each capable of handling up to 3 simultaneous voices with 2 separate EFX Inserts. The Real Solos are solo instruments such as Trumpet, Violin, Sax, Flute, Oboe etc. with distinctive sounds, refined controls over Aftertouch, Round Robin, Articulation and natural decay of samples, all for delivering the authentic feel of real musicians playing. The Organ section is crafted with particular attention: a rich selection of sounds from original electric organs that can be mixed with the digital Drawbars, combining the high quality textures of the first with the real organ feel of the latter (Twin Organ).

In addition to the outstanding internal voice editing system, EVENT SERIES also features a new 2.5 GB User Sampler: you can upload new factory sound banks (SBK) on the non-volatile Flash memory or create new custom sounds on up to 4 stereo layers. EVENT SERIES displays an external EFX controls on the panel, so you can easily adjust parameters of Brilliance, Chorus, Delay, Tremolo, Overdrive and Wah on the fly.

MICRO / VOICETRON

EVENT SERIES features a microphone menu with 2 inputs (Micro 1 and Micro 2) with relative gain controls and new dedicated effects, as well as an individual audio output for the Micro 1.

The Voicetron section has been revamped with new harmony effects and many parametric controls for an accurate tone customization.

PLAYER

The two integrated multimedia players can play a wide range of formats: MIDI, MP3, WAV, TXT, PDF, MP4 and many more. They are equipped with all the classic Karaoke functions such as viewing the Lyrics on an external display, Lead Mute, Crossfade, Search and Fade Out. Use Markers to reach different positions in songs, such as the beginning of a new verse or the end of the chorus. The new JukeBox offers quick access to different selections of music tracks, allowing performers to easily control their gig's workflow.

Stem plays up to five audio tracks simultaneously in perfect sync.

Each audio track has individual Mute and Volume controls, it is also possible to change its pitch and Tempo without altering the pitch of the rhythm.

It is also possible to exclude one or more tracks from playback, for example Piano or Bass, in case you want to play them live. A typical use of Stem is the playback of backing tracks with or without singing (Minus One), a particularly useful application for singers, guitarists in a live performance, but also for reed instrument soloists such as sax or trumpet.

CONNECTIVITY

EVENT SERIES has dedicated connections for audio, video and file management. Two separate pairs of outputs, in addition to the main outputs, provide seamless routing flexibility to independently control the various sound sources.

The high impedance and balanced inputs allow you to connect any sound source to the keyboard, such as a microphone, a guitar, a smartphone, or a tablet. Connect a compatible HDMI touchscreen monitor to display the lyrics or to control the instrument in mirror mode. A bigger control surface offers more flexibility and an easier access to all the EVENT SERIES functions, both in studio and on stage. In addition to the physical connections, Bluetooth and wireless modules allow you to stream audio from external devices, such as smartphones and tablets and remote control the instrument via the KETRON app.

ACCORDION

When controlled by a MIDI accordion, EVENT SERIES becomes the hearth of the show. Using the Classic mode, the accordionist can select different sounds for the right and the left hand. These combinations can be saved as Registrations and can be recalled in any moment of the performance.

The jazz accordionist can also greatly benefit from the internal drum styles.

GUITAR

The EVM is particularly suitable also for the solo Guitar entertainer, thanks to the Guitar Input with dedicated Effects (Chorus, Reverb, Delay, Distortion, Cabinet Speaker simulation etc.). With a suitable audio-to-Midi conversion system you can connect to the module even a regular electric or acoustic guitar.

DIGITAL PIANO/KEYBOARDS

The ideal and most immediate connection for the EVM is undoubtedly the one with Digital Pianos, Master keyboards, other Arrangers, Electronic organs and any other MIDI keyboard. The module is conveniently set up for performance with Arranger on the left side of the keyboard and Voice on the right.



Specifications

Polyphony	216 notes, multitimbral.
Keyboard	76 half weighted keys. 4 Dynamic curves. Pitch and Modulation wheels. Aftertouch. Portamento. Legato Mono_Poly. Transposer +/- 24. Octave +/- 2. Expr. Pedal with 6 curves.
Controls	15 sliders with RGB Led indicator. Brightness and color controls. 8 potentiometers for external EFX control.
Display	7" touch capacitive. Brightness control. 5 different skin colors.
Factory Sounds	10 Voice groups: Piano, Strings, Organ, Brass, Sax, Pad, Synth, Guitar, Bass, Ethnic. 464 Preset Voices. Voice 1, Voice 2, each Voice with up to 3 different sounds. Drawbars. Factory Advanced Voice Editing. High quality multilayer Sounds with a vast selection of Real Solos ®. Factory overwrite and restore. Up to 1.280 User Voices available. Arabic scale and key shift programmable per Voice.
User Sounds	2,5 GB free storage in non-volatile Flash memory (1,5 GB for additional Factory Sound Banks – 1 GB for User samples). Sample Editor: up to 8.192 samples (max 6 seconds per sample). Up to 4 layered stereo instruments (Voice or Drum Set). Advanced editor with Split, Octave, Level, Range, Tune, Cut off, Velocity, Adsr. Sample Loop utilities. User Drum kits.
Adsr/Filter	Separate sound controls for Attack, Decay, Sustain, LFO, Cut Off and Resonance.
Drum Set	62 Stereo Drums kits. 32 User Drum kits with Remap, Filter, Tune, FX controls. Drum Mixer: 9 sections with separate controls for level, pan, reverb, pitch, velocity compression. 86 Midi Drum styles (Pattern) available on Grv1_Loop section.
Drawbars	9 digital drawbars. Slow-Fast Rotor. Overdrive, Click, Vibrato, Reverb, Percussion. Full programmability. 24 Organ Presets. Twin Organ: possibility to mix PCM and Digital organ tones for a wide stereo sound reproduction.
Arranger	Over 500 Styles. Real Styles, featuring a mix of Midi and audio parts (see below), Live and Midi Styles. 10 groups: Ballad, Pop, Dance, Rock, Swing, Latin, Country, Folk, Party, Unplugged. 3 Intro, 3 Ending, Fill to End, ABCD, 4 Fills, 4 Break. Reintro, Count In, Pause, Key Start, Key Stop, Variation. User Styles with unlimited store capabilities. 5 Midi Chords and Bass. Close, Parallel, Logic mode. 3 x Lower with Mono/Poly function. Chord Variation. Varitone. Voice to ABCD. Auto Fill, Fill to Arrange, Fill to Aftertouch. Chord modes: Easy1, Easy2, Easy3, Fingered 1, Fingered 2. Orch. Variation Morphing. Rootless mode. Manual Bass, To Lowest, To Root. Bassist and Pianist mode (Standard/Expert). Bass and Chord Lock.
Live Drums	580 Live Drums with a complete Arranger structure (3 Intros, 3 Endings, ABCD, 4 Fills, 4 Breaks). Reverb and 3 band Parametric Equalizer with 10 presets, programmable on each style. Drum Boost. Possibility to load external User Live Drums. Drum Lock.
Grooves	3 x independent Groove sections. Huge library of more than 780 Latin percussions, Electro and Acoustic Drum loops, Single percussion hits. Groove to Variation. Separate volume and EFX controls.
Live Guitars	216 sliced Guitar patterns including Long Chords. Separate volume and EFX controls.
Real Chord	More than 300 Real audio accompaniments covering a full chord range (up to 13 different chords). A wide variety of electric, acoustic, and jazz guitars patterns and other orchestral sequences perfectly synchronized to Midi. Dedicated Insert EFX with full editor, programmable for each style. Possibility to load external User Real Chords.
Real Bass	256 Real audio Bases synchronized to Midi. Twin Bass: possibility to switch Midi or Audio on the same style. Support to external User audio Bases. 3 band Parametric Equalizer with 10 Presets, programmable on each style. Possibility to load external User Real Bases.
Style Modeling	Navigate and choose Drums, Grooves, Bass and Chords from the massive Midi and Audio Library. Multichord and Multibass templates.



Style Edit	Advanced pattern recording and editing. Copy, Quantize, Velocity, Octave functions. Special quantize available for oriental styles (7/8, 9/8, 13/8, etc.).
Registrations	4 Banks with unlimited Registrations controlling the global set up of the keyboard.
Performance	Provides fast access to Styles, Registrations with Style, Mp3, Wav or Midi files. 7 Sets with unlimited file storage.
Play Mode	Master, Accord/Style, Accord/Classic, Organist.
Phrase	Real time recording and play for Style chord sequences.
Custom Slider	2 x Custom slider (alternative to Lower 2 And 3) assignable to Micro, Arranger sections, Drum filter and other functions.
Footswitch	4 programmable Set. Assignable to the most relevant machine functions and features.
Arabic Scale	16 sets. 6 scale memories.
Dsp	Reverb, Chorus, Phaser, Flanger, Overdrive, Distortion, Tremolo, Autopan, Equalizer. 2 stereo EFX Insert assigned to Voice and Voice 2, 1 Insert to Arranger chords, 1 Insert to Real Chord. External panel controls: Overdrive, Brilliance, Chorus/Wah Depth and Rate, Delay Feedback and Level, Reverb Time, and Level. 64 Single Presets and 64 Chain Effects. Deep editing.
Stem	4 Scenes. 5 audio tracks per scene to be played simultaneously. Lead track, Transpose, Time Stretching, Loop, Solo, Mute, Autoplay. Fixed pitch for Drum section. Support for external User Stems.
Player	2 separate Player units feat. Transpose, Audio Time stretching, GM, Jukebox, Playlists, Drum Remix, Markers, Lyrics, Cross Fade, Search, PFL, Midi Mix, Karaoke Backgrounds. Support for wav, midi, mp3, mp4, avi, mov, flv, cdg, jpg, png, txt and pdf files.
HD Recording	1 stereo audio track. Midi and Song Style recording.
Audio Multitrack	5+1 audio tracks with separate slider control.
Micro	2 x Micro inputs. Micro 1 (XLR) with gain control. Effect with Reverb, Delay, Equalizer, Pitch shift. Micro 2 (jack) with volume and reverb control.
Voicetron	3 voice vocalizer. Assignable to Arranger or Midi file with Presets, Equalizer, Mode functions.
Video	HDMI connection for displaying lyrics, pictures, and videos. Mirror mode. Up to Full HD Resolution. Support for external touchscreen displays.
Bluetooth	Streaming audio input (ad2p profile).
Wi-Fi	Networked remote control via KETRON app.
Storage	240 GB internal SSD disk (Up to 80 GB reserved for System). Optional external SD Card (up to 512 GB).
Side Connections	2 x USB device. USB Host. HDMI.
Rear Connections	Main Out Left / Right. Aux 1 & Aux 2 (Left/Right). Headphone. Sustain pedal. Volume pedal. Footswitch. Midi In1, Midi In2, Out, Thru. Line In L/R. Micro 1, Micro 2.
Optional	Volume pedal normal or deluxe. Sustain pedal normal or piano type (available also with Footswitch connector). Footswitch 6 or 13 switches. Midi Pedalboard 13 notes (K8). Soft bag. Hard case.
Dim. / Weight	114 x 36,5 x 12,5 cm (44,8 x 14,3 x 5 in) / 14,8 Kg (32,6 lbs.)

* All specifications and appearances are subject to change without notice.

EVENT 61



Specifications	
Polyphony	216 notes, multitimbral.
Keyboard	61 half weighted keys. 4 Dynamic curves. Pitch and Modulation wheels. Aftertouch. Portamento. Legato Mono_Poly. Transposer +/- 24. Octave +/- 2. Expr. Pedal with 6 curves.
Controls	15 sliders with RGB Led indicator. Brightness and color controls. 8 potentiometers for external EFX control.
Display	7" touch capacitive. Brightness control. 5 different skin colors.
Factory Sounds	10 Voice groups: Piano, Strings, Organ, Brass, Sax, Pad, Synth, Guitar, Bass, Ethnic. 464 Preset Voices. Voice 1, Voice 2, each Voice with up to 3 different sounds. Drawbars. Factory Advanced Voice Editing. High quality multilayer Sounds with a vast selection of Real Solos ®. Factory overwrite and restore. Up to 1.280 User Voices available. Arabic scale and key shift programmable per Voice.
User Sounds	2,5 GB free storage in non-volatile Flash memory (1,5 GB for additional Factory Sound Banks – 1 GB for User samples). Sample Editor: up to 8.192 samples (max 6 seconds per sample). Up to 4 layered stereo instruments (Voice or Drum Set). Advanced editor with Split, Octave, Level, Range, Tune, Cut off, Velocity, Adsr. Sample Loop utilities. User Drum kits.
Adsr/Filter	Separate sound controls for Attack, Decay, Sustain, LFO, Cut Off and Resonance.
Drum Set	62 Stereo Drums kits. 32 User Drum kits with Remap, Filter, Tune, FX controls. Drum Mixer: 9 sections with separate controls for level, pan, reverb, pitch, velocity compression. 86 Midi Drum styles (Pattern) available on Grv1_Loop section.
Drawbars	9 digital drawbars. Slow-Fast Rotor. Overdrive, Click, Vibrato, Reverb, Percussion. Full programmability. 24 Organ Presets. Twin Organ: possibility to mix PCM and Digital organ tones for a wide stereo sound reproduction.
Arranger	Over 500 Styles. Real Styles, featuring a mix of Midi and audio parts (see below), Live and Midi Styles. 10 groups: Ballad, Pop, Dance, Rock, Swing, Latin, Country, Folk, Party, Unplugged. 3 Intro, 3 Ending, Fill to End, ABCD, 4 Fills, 4 Break. Reintro, Count In, Pause, Key Start, Key Stop, Variation. User Styles with unlimited store capabilities. 5 Midi Chords and Bass. Close, Parallel, Logic mode. 3 x Lower with Mono/Poly function. Chord Variation. Varitone. Voice to ABCD. Auto Fill, Fill to Arrange, Fill to Aftertouch. Chord modes: Easy1, Easy2, Easy3, Fingered 1, Fingered 2. Orch. Variation Morphing. Rootless mode. Manual Bass, To Lowest, To Root. Bassist and Pianist mode (Standard/Expert). Bass and Chord Lock.
Live Drums	580 Live Drums with a complete Arranger structure (3 Intros, 3 Endings, ABCD, 4 Fills, 4 Breaks). Reverb and 3 band Parametric Equalizer with 10 presets, programmable on each style. Drum Boost. Possibility to load external User Live Drums. Drum Lock.
Grooves	3 x independent Groove sections. Huge library of more than 780 Latin percussions, Electro and Acoustic Drum loops, Single percussion hits. Groove to Variation. Separate volume and EFX controls.
Live Guitars	216 sliced Guitar patterns including Long Chords. Separate volume and EFX controls.
Real Chord	More than 300 Real audio accompaniments covering a full chord range (up to 13 different chords). A wide variety of electric, acoustic, and jazz guitars patterns and other orchestral sequences perfectly synchronized to Midi. Dedicated Insert EFX with full editor, programmable for each style. Possibility to load external User Real Chords.
Real Bass	256 Real audio Bases synchronized to Midi. Twin Bass: possibility to switch Midi or Audio on the same style. Support to external User audio Bases. 3 band Parametric Equalizer with 10 Presets, programmable on each style. Possibility to load external User Real Bases.
Style Modeling	Navigate and choose Drums, Grooves, Bass and Chords from the massive Midi and Audio Library. Multichord and Multibass templates.



Style Edit	Advanced pattern recording and editing. Copy, Quantize, Velocity, Octave functions. Special quantize available for oriental styles (7/8, 9/8, 13/8, etc.).
Registrations	4 Banks with unlimited Registrations controlling the global set up of the keyboard.
Performance	Provides fast access to Styles, Registrations with Style, Mp3, Wav or Midi files. 7 Sets with unlimited file storage.
Play Mode	Master, Accord/Style, Accord/Classic, Organist.
Phrase	Real time recording and play for Style chord sequences.
Custom Slider	2 x Custom slider (alternative to Lower 2 And 3) assignable to Micro, Arranger sections, Drum filter and other functions.
Footswitch	4 programmable Set. Assignable to the most relevant machine functions and features.
Arabic Scale	16 sets. 6 scale memories.
Dsp	Reverb, Chorus, Phaser, Flanger, Overdrive, Distortion, Tremolo, Autopan, Equalizer. 2 stereo EFX Insert assigned to Voice and Voice 2, 1 Insert to Arranger chords, 1 Insert to Real Chord. External panel controls: Overdrive, Brilliance, Chorus/Wah Depth and Rate, Delay Feedback and Level, Reverb Time, and Level. 64 Single Presets and 64 Chain Effects. Deep editing.
Stem	4 Scenes. 5 audio tracks per scene to be played simultaneously. Lead track, Transpose, Time Stretching, Loop, Solo, Mute, Autoplay. Fixed pitch for Drum section. Support for external User Stems.
Player	2 separate Player units feat. Transpose, Audio Time stretching, GM, Jukebox, Playlists, Drum Remix, Markers, Lyrics, Cross Fade, Search, PFL, Midi Mix, Karaoke Backgrounds. Support for wav, midi, mp3, mp4, avi, mov, flv, cdg, jpg, png, txt and pdf files.
HD Recording	1 stereo audio track. Midi and Song Style recording.
Audio Multitrack	5+1 audio tracks with separate slider control.
Micro	2 x Micro inputs. Micro 1 (XLR) with gain control. Effect with Reverb, Delay, Equalizer, Pitch shift. Micro 2 (jack) with volume and reverb control.
Voicetron	3 voice vocalizer. Assignable to Arranger or Midi file with Presets, Equalizer, Mode functions.
Video	HDMI connection for displaying lyrics, pictures, and videos. Mirror mode. Up to Full HD Resolution. Support for external touchscreen displays.
Bluetooth	Streaming audio input (ad2p profile).
Wi-Fi	Networked remote control via KETRON app.
Storage	240 GB internal SSD disk (Up to 80 GB reserved for System). Optional external SD Card (up to 512 GB).
Side Connections	2 x USB device. USB Host. HDMI.
Rear Connections	Main Out Left / Right. Aux 1 & Aux 2 (Left/Right). Headphone. Sustain pedal. Volume pedal. Footswitch. Midi In1, Midi In2, Out, Thru. Line In L/R. Micro 1, Micro 2.
Optional	Volume pedal normal or deluxe. Sustain pedal normal or piano type (available also with Footswitch connector). Footswitch 6 or 13 switches. Midi Pedalboard 13 notes (K8). Soft bag. Hard case.
Dim. / Weight	92,5 x 36,5 x 12,5 cm (36,41 x 14,3 x 5 in) / 13 Kg (28,66 lbs.)

* All specifications and appearances are subject to change without notice.

EVENT CHROM



Specifications	
Polyphony	216 notes, multitimbral.
Keyboard	Chromatic keyed: Right 52, Left 120 basses, 4 Velocity Curves. Programmable touch response. Aftertouch. Portamento. Joystick: Pitch. Modulation. Transposer: +/- 24. Octave: +/- 2.
Controls	15 sliders with RGB Led indicator. Brightness and color controls. 8 potentiometers for external EFX control.
Display	7" touch capacitive. Brightness control. 5 different skin colors.
Factory Sounds	10 Voice groups: Piano, Strings, Organ, Brass, Sax, Pad, Synth, Guitar, Bass, Ethnic. 464 Preset Voices. Voice 1, Voice 2, each Voice with up to 3 different sounds. Drawbars. Factory Advanced Voice Editing. High quality multilayer Sounds with a vast selection of Real Solos ®. Factory overwrite and restore. Up to 1.280 User Voices available. Arabic scale and key shift programmable per Voice.
User Sounds	2,5 GB free storage in non-volatile Flash memory (1,5 GB for additional Factory Sound Banks – 1 GB for User samples). Sample Editor: up to 8.192 samples (max 6 seconds per sample). Up to 4 layered stereo instruments (Voice or Drum Set). Advanced editor with Split, Octave, Level, Range, Tune, Cut off, Velocity, Adsr. Sample Loop utilities. User Drum kits.
Adsr/Filter	Separate sound controls for Attack, Decay, Sustain, LFO, Cut Off and Resonance.
Drum Set	62 Stereo Drums kits. 32 User Drum kits with Remap, Filter, Tune, FX controls. Drum Mixer: 9 sections with separate controls for level, pan, reverb, pitch, velocity compression. 86 Midi Drum styles (Pattern) available on Grv1_Loop section.
Drawbars	9 digital drawbars. Slow-Fast Rotor. Overdrive, Click, Vibrato, Reverb, Percussion. Full programmability. 24 Organ Presets. Twin Organ: possibility to mix PCM and Digital organ tones for a wide stereo sound reproduction.
Arranger	Over 500 Styles. Real Styles, featuring a mix of Midi and audio parts (see below), Live and Midi Styles. 10 groups: Ballad, Pop, Dance, Rock, Swing, Latin, Country, Folk, Party, Unplugged. 3 Intro, 3 Ending, Fill to End, ABCD, 4 Fills, 4 Break. Reintro, Count In, Pause, Key Start, Key Stop, Variation. User Styles with unlimited store capabilities. 5 Midi Chords and Bass. Close, Parallel, Logic mode. 3 x Lower with Mono/Poly function. Chord Variation. Varitone. Voice to ABCD. Auto Fill, Fill to Arrange, Fill to Aftertouch. Chord modes: Easy1, Easy2, Easy3, Fingered 1, Fingered 2. Orch. Variation Morphing. Rootless mode. Manual Bass, To Lowest, To Root. Bassist and Pianist mode (Standard/Expert). Bass and Chord Lock.
Live Drums	580 Live Drums with a complete Arranger structure (3 Intros, 3 Endings, ABCD, 4 Fills, 4 Breaks). Reverb and 3 band Parametric Equalizer with 10 presets, programmable on each style. Drum Boost. Possibility to load external User Live Drums. Drum Lock.
Grooves	3 x independent Groove sections. Huge library of more than 780 Latin percussions, Electro and Acoustic Drum loops, Single percussion hits. Groove to Variation. Separate volume and EFX controls.
Live Guitars	216 sliced Guitar patterns including Long Chords. Separate volume and EFX controls.
Real Chord	More than 300 Real audio accompaniments covering a full chord range (up to 13 different chords). A wide variety of electric, acoustic, and jazz guitars patterns and other orchestral sequences perfectly synchronized to Midi. Dedicated Insert EFX with full editor, programmable for each style. Possibility to load external User Real Chords.
Real Bass	256 Real audio Bases synchronized to Midi. Twin Bass: possibility to switch Midi or Audio on the same style. Support to external User audio Bases. 3 band Parametric Equalizer with 10 Presets, programmable on each style. Possibility to load external User Real Bases.
Style Modeling	Navigate and choose Drums, Grooves, Bass and Chords from the massive Midi and Audio Library. Multichord and Multibass templates.



Style Edit	Advanced pattern recording and editing. Copy, Quantize, Velocity, Octave functions. Special quantize available for oriental styles (7/8, 9/8, 13/8, etc.).
Registrations	4 Banks with unlimited Registrations controlling the global set up of the keyboard.
Performance	Provides fast access to Styles, Registrations with Style, Mp3, Wav or Midi files. 7 Sets with unlimited file storage.
Play Mode	Master, Accord/Style, Accord/Classic, Organist.
Phrase	Real time recording and play for Style chord sequences.
Custom Slider	2 x Custom slider (alternative to Lower 2 And 3) assignable to Micro, Arranger sections, Drum filter and other functions.
Footswitch	4 programmable Set. Assignable to the most relevant machine functions and features.
Arabic Scale	16 sets. 6 scale memories.
Dsp	Reverb, Chorus, Phaser, Flanger, Overdrive, Distortion, Tremolo, Autopan, Equalizer. 2 stereo EFX Insert assigned to Voice and Voice 2, 1 Insert to Arranger chords, 1 Insert to Real Chord. External panel controls: Overdrive, Brilliance, Chorus/Wah Depth and Rate, Delay Feedback and Level, Reverb Time, and Level. 64 Single Presets and 64 Chain Effects. Deep editing.
Stem	4 Scenes. 5 audio tracks per scene to be played simultaneously. Lead track, Transpose, Time Stretching, Loop, Solo, Mute, Autoplay. Fixed pitch for Drum section. Support for external User Stems.
Player	2 separate Player units feat. Transpose, Audio Time stretching, GM, Jukebox, Playlists, Drum Remix, Markers, Lyrics, Cross Fade, Search, PFL, Midi Mix, Karaoke Backgrounds. Support for wav, midi, mp3, mp4, avi, mov, flv, cdg, jpg, png, txt and pdf files.
HD Recording	1 stereo audio track. Midi and Song Style recording.
Audio Multitrack	5+1 audio tracks with separate slider control.
Micro	2 x Micro inputs. Micro 1 (XLR) with gain control. Effect with Reverb, Delay, Equalizer, Pitch shift. Micro 2 (jack) with volume and reverb control.
Voicetron	3 voice vocalizer. Assignable to Arranger or Midi file with Presets, Equalizer, Mode functions.
Video	HDMI connection for displaying lyrics, pictures, and videos. Mirror mode. Up to Full HD Resolution. Support for external touchscreen displays.
Bluetooth	Streaming audio input (ad2p profile).
Wi-Fi	Networked remote control via KETRON app.
Storage	240 GB internal SSD disk (Up to 80 GB reserved for System). Optional external SD Card (up to 512 GB).
Side Connections	2 x USB device. USB Host. HDMI.
Rear Connections	Main Out Left / Right. Aux 1 & Aux 2 (Left/Right). Headphone. Sustain pedal. Volume pedal. Footswitch. Midi In1, Midi In2, Out, Thru. Line In L/R. Micro 1, Micro 2.
Optional	Volume pedal normal or deluxe. Sustain pedal normal or piano type (available also with Footswitch connector). Footswitch 6 or 13 switches. Midi Pedalboard 13 notes (K8). Soft bag. Hard case.
Dim. / Weight	92,5 x 36,5 x 12,5 cm (36,41 x 14,3 x 5 in) / 13 Kg (28,66 lbs.)

* All specifications and appearances are subject to change without notice.

FUSION



Specifications	
Polyphony	216 notes, multitimbral.
Keyboard	61-note light weighted action with velocity and aftertouch. 4 Dynamic curves.
Controls	Aftertouch. Portamento. Legato Mono/Poly. Transposer +/- 24. Octave +/- 2. Sustain pedal. Volume/Expr. Pedal with 6 curves. Joystick with Pitch and Modulation. 2 Articulations. Ribbon controller: Arabic Scale. Arabic Set. Koma. 10 sliders with rgb led
Display	7" touch capacitive display. Brightness control. 5 different skin colors.
Factory Sounds	10 Voice Families : Piano, Strings, Organ, Brass, Sax, Pad, Synth, Guitar, Bass, Ethnic. 464 Factory Presets. A single Preset can be made with up to 5 different sounds. Second Voice. High quality multilayer sounds with a great selection of Real Solos ® and a large variety of oriental instruments. Advanced Voice Editing. Factory overwrite and restore. Up to 1.280 User Voices available. Preset programmable Arabic scale and key shif.
User Sounds	4 GB non-volatile Flash memory for additional sounds (2 GB for Sound Banks and 2 GB for User Samples). Sample Editor : up to 32.768 samples (max 6 seconds per sample). 128 stereo instruments (Voice or Drum Set), up to 4 layers per instrument and up to 64 splits per layer. Advanced editor with Split, Octave, Level, Range, Tune, Cut off, Velocity, Adsr. Sample Loop utilities. User Drum kits.
Adsr/Filter	separate controls for Attack, Decay, Sustain, Lfo, Cut Off and Resonance.
Drum Set	44 Drums kits. 18 Oriental Kits. 32 User Drum kits with Remap, Filter, Tune, FX controls.
Drum Mixer	9 sections with separate controls for level, pan, reverb, pitch, velocity compression. 86 Midi Drum styles (Pattern)on Grv1_Loop section.
Arranger	More than 550 International Styles. Audio, Live and Midi styles. Freeze real control. 260 Live Styles. Over 64 Oriental Styles. 10 groups : Ballad, Pop, Dance, Rock, Swing, Latin, Country, Folk, Party, Ethnic. 3 Intro, 3 Ending, Fill to End, ABCD, 4 Fills, 4 Break. Reintro, Count In, Pause, Key Start, Key Stop, Variation. User Styles with unlimited store capabilities. 5 Midi Chords and Bass. Close, Parallel, Logic mode. 3 x Lower with Mono/Poly function. Chord Variation. Varitone. Voice to ABCD. Auto Fill, Fill to Arrange, Fill to Aftertouch. Chord modes: Easy1, Easy2, Easy3, Fingered 1, Fingered 2. Orch. Variation Morphing. Rootless mode. Manual Bass, To Lowest, To Root. Bassist and Pianist mode (Standard/Expert).
Live Drums	Over 500 Live Drums with a complete Arranger structure (3 Intros, 3 Endings, ABCD, 4 Fills, 4 Breaks). Oriental and Latin Percussions loops. Reverb and 3 band Parametric Equalizer with 10 presets, programmable on each style. Drum Boost. Possibility to load external User Live Drums.
Drum Pad	Real time control for percussions.
Grooves	3 x independent Groove sections. Huge library of more than 780 Latin percussions, Electro and Acoustic Drum loops, Single percussion hits. Groove to Variation. Separate volume and EFX controls.
Live Guitars	216 sliced Guitar patterns including Long Chords. Separate volume and EFX controls.
Real Chord	Real audio accompaniments covering a full chord range (up to 13 different chords). A big variety of electric, acoustic and jazz guitars patterns and other orchestral sequences synchronized to Midi. Dedicated Insert EFX with full editor, programmable for each style. Possibility to load external User Real Chords. Possibility to modify the Style voices with Adsr, filter and Q.
Real Bass	Real audio Bases.Twin Bass. Support to external User audio Bases. 3 band Parametric Equalizer with 10 Presets, programmable on each style.
Style Modeling	Navigate and choose Drums, Grooves, Bass and Chords from the massive Midi and Audio Library. Multichord and Multibass templates.



Style Edit	Advanced pattern recording and editing. Copy, Quantize, Velocity, Octave functions. Special quantize available for oriental styles (7/8, 9/8, 13/8, etc.). Single GM voice edit with ADSR and Filter.
Registrations	4 Banks with unlimited Registrations controlling the global set up of the keyboard.
Performance	Fast access to Styles, Registrations, Mp3, Wav, Midi files and Subfolders. 7 Sets with unlimited file storage.
Play Mode	Master, Accord/Style, Accord/Classic, Organist.
Phrase	Real time recording and play for Style chord sequences.
Custom Slider	2 x Custom slider (alternative to Lower 2 And 3) assignable to Micro, Arranger sections, Drum filter and other functions.
Footswitch	20 programmable Set. Assignable to the most relevant machine functions and features.
Arabic Scale	16 sets. 6 scale memories.
Dsp	Reverb, Chorus, Phaser, Flanger, Overdrive, Distortion, Tremolo, Autopan, Equalizer. 2 Stereo EFX Inserts (one dedicated to Voice and one to Style/Midifiles). 64 Single Presets and 64 Chain Effects. Deep editing. Dedicated reverb and EQs for Drumsets. Dedicated reverb for Arranger section.
Stem	4 Scenes. 5 audio tracks per scene to be played simultaneously. Lead track, Transpose, Time Stretching, Loop, Solo, Mute, Autoplay. Fixed pitch for Drum section. Support for external User Stems.
Player	Transpose, Audio Time stretching, GM, Jukebox, Playlists, Drum Remix, Markers, Lyrics, Cross Fade, Search, Midi Mix, Karaoke Backgrounds. Support for wav, midi, mp3, mp4, avi, mov, flv, cdg, jpg, png, txt and pdf files.
KTune	Audio Wav files can be assigned to keys. Synchronization with Style (Bar, Beat).
HD Recording	1 stereo audio track. Midi and Song Style recording.
Audio Multitrack	5+1 audio tracks with separate track control.
Micro	2 x Micro inputs. Micro 1 (XLR) with gain control and phantom power. Effect with Reverb, Delay, Equalizer, Pitch shift. Micro 2 (jack) with volume and reverb control.
Voicetron	3 voice vocalizer. Assignable to Arranger or Midi file with Presets, Equalizer, Mode functions.
Video	HDMI connection for displaying lyrics, pictures and videos. Mirror mode. Up to Full HD Resolution. Support for external touchscreen displays.
Bluetooth	Streaming audio input (ad2p profile).
Wi-Fi	Remote control via VNC.
Storage	240 GB internal SSD disk (Up to 60 GB reserved for System). Optional external SD Card (up to 512 GB).
Side Connections	2 x USB device. USB Host. HDMI.
Rear Connections	Main Out Left / Right. Headphone/Aux. Sustain pedal. Volume pedal. Footswitch. Midi In, Midi Out. Micro 1, Micro 2.
Optional	Volume pedal normal or deluxe. Sustain pedal normal or piano type (available also with Footswitch connector). Footswitch 6 or 13 switches. Midi Pedalboard 13 notes (K8). Soft bag. Hard case.
Dim. / Weight	99,5 x 36,6 x 11,5 cm (39,1 x 14,41 x 4,53 inch) / 11 Kg (24,2 lbs.)

* Specifications and appearance are subject to change without notice.

EVENT X



Specifications	
Polyphony	216 notes, multitimbral.
Controls	12 sliders with RGB Led indicator. Brightness and color controls. 4 Dynamic curves. Aftertouch. Portamento. Legato Mono_Poly. Transposer +/- 24. Octave +/- 2. Expr. Pedal with 6 curves.
Display	7" touch capacitive. Brightness control. 5 different skin colors.
Factory Sounds	10 Voice groups: Piano, Strings, Organ, Brass, Sax, Pad, Synth, Guitar, Bass, Ethnic. 464 Preset Voices. Voice 1, Voice 2, each Voice with up to 3 different sounds. Drawbars. Factory Advanced Voice Editing. High quality multilayer Sounds with a vast selection of Real Solos ®. Factory overwrite and restore. Up to 1.280 User Voices available. Arabic scale and key shift programmable per Voice.
User Sounds	2,5 GB free storage in non-volatile Flash memory (1,5 GB for additional Factory Sound Banks - 1 GB for User samples). Sample Editor: up to 228480 samples (mono, usable 8192, max 6 seconds per sample). Up to 4 layered stereo instruments (Voice or Drum Set). Advanced editor with Split, Octave, Level, Range, Tune, Cut off, Velocity, Adsr. Sample Loop utilities. User Drum kits.
Adsr/Filter	Separate sound controls for Attack, Decay, Sustain, LFO, Cut Off and Resonance.
Drum Set	62 Stereo Drums kits. 32 User Drum kits with Remap, Filter, Tune, FX controls. Drum Mixer: 9 sections with separate controls for level, pan, reverb, pitch, velocity compression. 86 Midi Drum styles (Pattern) available on Grv1_Loop section.
Drawbars	9 digital drawbars. Slow-Fast Rotor. Overdrive, Click, Vibrato, Reverb, Percussion. Full programmability. 24 Organ Presets. Twin Organ: possibility to mix PCM and Digital organ tones for a wide stereo sound reproduction.
Arranger	Over 500 Styles. Real Styles, featuring a mix of Midi and audio parts (see below), Live and Midi Styles. 10 groups: Ballad, Pop, Dance, Rock, Swing, Latin, Country, Folk, Party, Unplugged. 3 Intro, 3 Ending, Fill to End, ABCD, 4 Fills, 4 Break. Reintro, Count In, Pause, Key Start, Key Stop, Variation. User Styles with unlimited store capabilities. 5 Midi Chords and Bass. Close, Parallel, Logic mode. 3 x Lower with Mono/Poly function. Chord Variation. Varitone. Voice to ABCD. Auto Fill, Fill to Arrange, Fill to Aftertouch. Chord modes: Easy1, Easy2, Easy3, Fingered 1, Fingered 2. Orch. Variation Morphing. Rootless mode. Manual Bass, To Lowest, To Root. Bassist and Pianist mode (Standard/Expert). Bass and Chord Lock.
Live Drums	580 Live Drums with a complete Arranger structure (3 Intros, 3 Endings, ABCD, 4 Fills, 4 Breaks). Reverb and 3 band Parametric Equalizer with 10 presets, programmable on each style. Drum Boost. Possibility to load external User Live Drums. Drum Lock.
Grooves	3 x independent Groove sections. Huge library of more than 780 Latin percussions, Electro and Acoustic Drum loops, Single percussion hits. Groove to Variation. Separate volume and EFX controls.
Live Guitars	216 sliced Guitar patterns including Long Chords. Separate volume and EFX controls.
Real Chord	More than 300 Real audio accompaniments covering a full chord range (up to 13 different chords). A wide variety of electric, acoustic, and jazz guitars patterns and other orchestral sequences perfectly synchronized to Midi. Dedicated Insert EFX with full editor, programmable for each style. Possibility to load external User Real Chords.
Real Bass	256 Real audio Bases synchronized to Midi. Twin Bass: possibility to switch Midi or Audio on the same style. Support to external User audio Bases. 3 band Parametric Equalizer with 10 Presets, programmable on each style. Possibility to load external User Real Bases.
Style Modeling	Navigate and choose Drums, Grooves, Bass and Chords from the massive Midi and Audio Library. Multichord and Multibass templates.



Style Edit	Advanced pattern recording and editing. Copy, Quantize, Velocity, Octave functions. Special quantize available for oriental styles (7/8, 9/8, 13/8, etc.).
Registrations	4 Banks with unlimited Registrations controlling the global set up of the keyboard.
Performance	Provides fast access to Styles, Registrations with Style, Mp3, Wav or Midi files. 7 Sets with unlimited file storage.
Play Mode	Master, Accord/Style, Accord/Classic, Organist.
Phrase	Real time recording and play for Style chord sequences.
Footswitch	4 programmable Set. Assignable to the most relevant machine functions and features.
Arabic Scale	16 sets. 6 scale memories.
Dsp	Reverb, Chorus, Phaser, Flanger, Overdrive, Distortion, Tremolo, Autopan, Equalizer. 2 stereo EFX Insert assigned to Voice and Voice 2, 1 Insert to Arranger chords, 1 Insert to Real Chord. 64 Single Presets and 64 Chain Effects. Deep editing.
Stem	4 Scenes. 5 audio tracks per scene to be played simultaneously. Lead track, Transpose, Time Stretching, Loop, Solo, Mute, Autoplay. Fixed pitch for Drum section. Support for external User Stems.
Player	2 separate Player units feat. Transpose, Audio Time stretching, GM, Jukebox, Playlists, Drum Remix, Markers, Lyrics, Cross Fade, Search, PFL, Midi Mix, Karaoke Backgrounds. Support for wav, midi, mp3, mp4, avi, mov, flv, cdg, jpg, png, txt and pdf files.
HD Recording	1 stereo audio track. Midi and Song Style recording.
Audio Multitrack	5+1 audio tracks with separate slider control.
Micro	2 x Micro inputs. Micro 1 (XLR) with gain control. Effect with Reverb, Delay, Equalizer, Pitch shift. Micro 2 (jack) with volume and reverb control.
Voicetron	3 voice vocalizer. Assignable to Arranger or Midi file with Presets, Equalizer, Mode functions.
Video	HDMI connection for displaying lyrics, pictures, and videos. Mirror mode. Up to Full HD Resolution. Support for external touchscreen displays.
Bluetooth	Streaming audio input (ad2p profile).
Wi-Fi	Networked remote control via KETRON app.
Storage	240 GB internal SSD disk (80 GB reserved for System). Optional external SD Card (up to 512 GB).
Side Connections	2 x USB device. USB Host. HDMI.
Rear Connections	Main Out Left / Right. Headphone. Sustain pedal. Volume pedal. Footswitch. Midi In1, Midi In2, Out, Thru. Micro 1, Micro 2.
Optional	Volume pedal normal or deluxe. Sustain pedal normal or piano type (available also with Footswitch connector). Footswitch 6 or 13 switches. Midi Pedalboard 13 notes (K8). Soft bag. Hard case.
Dim. / Weight	43 x 26 x 10,5 cm (16,9 x 10,2 x 4,1 in) / 3,9 Kg (8,6 lbs.)



EVENT in a BOX!

It seems incredible, but our highly acclaimed EVENT flagship is now entirely contained within this remarkably compact module, featuring the same Sounds, the same Real Styles and all other functions of the keyboard. Perhaps no other arranger product has ever been created with such a concentration of musical possibilities. The EVM is easily adaptable to various forms of use since it is fully Midi compatible. If you are considering a compact, easy-to-carry device that can replace your arranger keyboard in a live gig situation, during plane trips or in studio recording sessions, the EVM is undoubtedly the perfect choice for you.

Specifications	
Polyphony	216 notes, multitimbral.
Controls	4 Dynamic curves. Aftertouch. Portamento. Legato Mono_Poly. Transposer +/- 24. Octave +/- 2. Expr. Pedal with 6 curves.
Factory Sounds	10 Voice groups: Piano, Strings, Organ, Brass, Sax, Pad, Synth, Guitar, Bass, Ethnic. 464 Preset Voices. Voice 1, Voice 2, each Voice with up to 3 different sounds. Drawbars. Factory Advanced Voice Editing. High quality multilayer Sounds with a vast selection of Real Solos ®. Factory overwrite and restore. Up to 1.280 User Voices available. Arabic scale and key shift programmable per Voice.
User Sounds	2,5 GB free storage in non-volatile Flash memory (1,5 GB for additional Factory Sound Banks - 1 GB for User samples). Sample Editor: up to 228480 samples (mono, usable 8192, max 6 seconds per sample). Up to 4 layered stereo instruments (Voice or Drum Set). Advanced editor with Split, Octave, Level, Range, Tune, Cut off, Velocity, Adsr. Sample Loop utilities. User Drum kits.
Adsr/Filter	Separate sound controls for Attack, Decay, Sustain, LFO, Cut Off and Resonance.
Drum Set	62 Stereo Drums kits. 32 User Drum kits with Remap, Filter, Tune, FX controls. Drum Mixer: 9 sections with separate controls for level, pan, reverb, pitch, velocity compression. 86 Midi Drum styles (Pattern) available on Grv1_Loop section.
Drawbars	9 digital drawbars. Slow-Fast Rotor. Overdrive, Click, Vibrato, Reverb, Percussion. Full EDITING. 24 Organ Presets. Twin Organ: possibility to mix PCM and Digital organ tones for a wide stereo sound reproduction.
Arranger	Over 500 Styles. Real Styles, featuring a mix of Midi and audio parts (see below), Live and Midi Styles. 10 groups: Ballad, Pop, Dance, Rock, Swing, Latin, Country, Folk, Party, Unplugged. 3 Intro, 3 Ending, Fill to End, ABCD, 4 Fills, 4 Break. Reintro, Count In, Pause, Key Start, Key Stop, Variation. User Styles with unlimited store capabilities. 5 Midi Chords and Bass. Close, Parallel, Logic mode. 3 x Lower with Mono/Poly function. Chord Variation. Varitone. Voice to ABCD. Auto Fill, Fill to Arrange, Fill to Aftertouch. Chord modes: Easy1, Easy2, Easy3, Fingered 1, Fingered 2. Orch. Variation Morphing. Rootless mode. Manual Bass, To Lowest, To Root. Bassist and Pianist mode (Standard/Expert). Bass and Chord Lock.
Live Drums	580 Live Drums with a complete Arranger structure (3 Intros, 3 Endings, ABCD, 4 Fills, 4 Breaks). Reverb and 3 band Parametric Equalizer with 10 presets, programmable on each style. Drum Boost. Possibility to load external User Live Drums. Drum Lock.
Grooves	3 x independent Groove sections. Huge library of more than 780 Latin percussions, Electro and Acoustic Drum loops, Single percussion hits. Groove to Variation. Separate volume and EFX controls.
Live Guitars	216 sliced Guitar patterns including Long Chords. Separate volume and EFX controls.
Real Chord	More than 300 Real audio accompaniments covering a full chord range (up to 13 different chords). A wide variety of electric, acoustic, and jazz guitars patterns and other orchestral sequences perfectly synchronized to Midi. Dedicated Insert EFX with full editor, programmable for each style. Possibility to load external User Real Chords.
Real Bass	256 Real audio Bases synchronized to Midi. Twin Bass: possibility to switch Midi or Audio on the same style. Support to external User audio Bases. 3 band Parametric Equalizer with 10 Presets, programmable on each style. Possibility to load external User Real Bases.
Style Modeling	Navigate and choose Drums, Grooves, Bass and Chords from the massive Midi and Audio Library. Multichord and Multibass templates.



Style Edit	Advanced pattern recording and editing. Copy, Quantize, Velocity, Octave functions. Special quantize available for oriental styles (7/8, 9/8, 13/8, etc.).
Registrations	4 Banks with unlimited Registrations controlling the global set up of the instrument.
Performance	Provides fast access to Styles, Registrations with Style, Mp3, Wav or Midi files. 7 Sets with unlimited file storage.
Play Mode	Master, Accord/Style, Accord/Classic, Organist.
Phrase	Real time recording and play for Style chord sequences.
Footswitch	4 programmable Set. Assignable to the most relevant instrument functions and features.
Arabic Scale	16 sets. 6 scale memories.
Dsp	Reverb, Chorus, Phaser, Flanger, Overdrive, Distortion, Tremolo, Autopan, Equalizer. 2 stereo EFX Insert assigned to Voice and Voice 2, 1 Insert to Arranger chords, 1 Insert to Real Chord. 64 Single Presets and 64 Chain Effects. Deep editing.
Stem	4 Scenes. 5 audio tracks per scene to be played simultaneously. Lead track, Transpose, Time Stretching, Loop, Solo, Mute, Autoplay. Fixed pitch for Drum section. Support for external User Stems.
Player	2 separate Player units feat. Transpose, Audio Time stretching, GM, Jukebox, Playlists, Drum Remix, Markers, Lyrics, Cross Fade, Search, PFL, Midi Mix, Karaoke Backgrounds. Support for wav, midi, mp3, mp4, avi, mov, flv, cdg, jpg, png, txt and pdf files.
HD Recording	1 stereo audio track. Midi and Song Style recording.
Audio Multitrack	5+1 audio tracks.
Inputs	1 Micro input (combo XLR) with phantom power (48V) and with gain control. Effect with Reverb, Delay, Equalizer, Pitch shift. Second Input (TRS) for microphone, line and instrument level signals with volume and reverb control.
Voicetron	3 voice vocalizer. Assignable to Arranger or Midi file with Presets, Equalizer, Mode functions.
Video	HDMI connection for displaying lyrics, pictures, and videos (up to Full HD Resolution). Remote control via HDMI (1280x720 Resolution capable screen is required).
Bluetooth	Streaming audio input (ad2p profile).
Remote control	Remote control via VNC (Wi-Fi direct, LAN direct or LAN DHCP) or via HDMI. Connection mode led on front panel and connection mode switches on rear panel.
Wi-Fi	Remote control via VNC (Wi-Fi direct).
LAN	Remote control via Ethernet cable (direct connection or DHCP).
Storage	240 GB internal SSD disk (80 GB reserved for System). Optional external SD Card (up to 512 GB).
Front Connections	Headphones, Input, Micro with direct output.
Rear Connections	Main Out Left / Right. Sustain pedal. Volume pedal. Footswitch. Midi In1, Midi In2, Out, Thru, 2 x USB device. USB Host. HDMI, Ethernet.
Optional	Monitor. Volume pedal normal or deluxe. Sustain pedal normal or piano type (available also with Footswitch connector). Footswitch 6 or 13 switches. Midi Pedalboard 13 notes (K8). Backpack.
Dim. / Weight	27 x 20 x 6 cm (10,6 x 7,8 x 2,3 in) / 2 Kg (41 lbs.)

* All specifications and appearances are subject to change without notice.



The EVS is a versatile, pocket-sized professional sound module. Its internal board incorporates the sound generation and drum kits from the renowned Event keyboard, providing a wide range of high-quality orchestral sounds. It features 256 Factory Presets and 256 User-programmable Presets, each ones composed by up to 3 independent GM Voices. A dedicated desktop Voice Editor allows users to create custom voices with up to three layered sounds, which can then be saved directly into the EVS internal memory. The module can be controlled via USB or through classic MIDI In/Out connectors, and it can function simultaneously as a sound module connected to a MIDI master keyboard and as a MIDI file player. With quick access to top-tier sounds, the EVS is the perfect companion for MIDI backing and home studio production.

Specifications

Polyphony	120 notes.
Multitimbral	32 parts (2x16).
Sounds	464 GM Factory Voices, 256 Factory Presets and 256 User Presets.
Drum Set	62 Factory Drumsets.
Dsp	Reverb, Chorus, Phaser, Flanger, Overdrive, Distortion, Tremolo, Autopan, Equalizer. 64 Single Presets and 64 Chain Effects.
Connections	Main Out Left / Right, Headphones, Midi In, Midi Thru, USB host (Midi), USB device.
Controls	Volume.
Sound Editor	To create, edit, organize and store EVS Presets and Sounds. For Mac and PC.
Optional	Soft bag.
Power supply	External power supply 5V or USB powered.
Dim. / Weight	15,5 x 10,5 x 4,5 cm (6,1 x 4,1 x 1,8 inch) / 0,5 Kg (1,1 lbs.)

EVP 4



Equipped with an 88-note weighted keyboard and an accurate dynamic touch response, the EVP 4 offers a remarkable variety of high-quality sounds, exceptional within its price range. This portable digital piano is designed to meet the needs of contemporary pianists while being lightweight and easy to carry. The EVP 4 features professional Acoustic Grand Pianos sounds, an extensive selection of Electric Pianos, Strings, Brass, Organs, and other orchestral sections. Additionally, the EVP 4 can seamlessly play MP3 files while allowing real-time performance using the internal voices. The integrated battery ensures it can be played in any environment, even outdoors. With its versatility, the EVP 4 is the perfect instrument for schools, home studios, entertainment and live performances.

Specifications

Keyboard	88-note weighted action with velocity.
Display	LCD display.
Sounds	Professional sounds covering a wide variety of instruments. 169 Factory Presets and 16 User Presets.
Rhythm	100 Factory Rhythms and 16 User Rhythms.
Metronome	1/4, 2/4, 3/4, 4/4.
Effects	Chorus. Reverb.
Player	Recorded Midi Songs (10000 notes), Mp3.
Controls	Volume. Tone. Rhythm. Start/Stop. Metronome. Record. Play. MP3. Function.
Connections	Main output. Line In. Mic In. USB Midi. USB Disk. Sustain Pedal. Headphone.
Bluetooth	Streaming audio input from mobile Bluetooth devices.
Amplification	2 x 25 W speakers.
Power supply	110/220 V AC input. 15V/3A output. Lithium internal battery.

EVP 1

Event Digital Pianos

Following the success of the acclaimed Event Keyboard, KETRON is proud to introduce the new Event Digital Pianos. These innovative instruments seamlessly blend the timeless elegance of a traditional piano with cutting-edge technology, offering a complete setup for modern piano entertainment. Each model is equipped with a high-quality 88-keys hammer-action keyboard, ensuring an authentic and expressive playing experience. The Natural Damper Resonance (N.D.R.) technology adds a significant layer of touch to the piano Voices, replicating the subtle tonal changes that occur when the sustain pedal is pressed, just like on an acoustic grand piano. Three brand new Grand Piano sounds are added to the already vast sound library of KETRON Event arrangers series. Beyond the exceptional piano Voices, these instruments include an advanced Arranger, featuring KETRON's exclusive Real Audio Styles, superb orchestral Voices and a powerful multimedia Player capable of handling MP3, WAV, MIDI, and MP4 formats. Additional features include an audio and Midi Recorder, two Microphone inputs, an Audio Multitrack player, Stems, Bluetooth audio streaming and K-Tune. The full control of these features is assigned to a large 15" touch screen monitor.

The Event Digital Pianos are available in three models: Grand, Upright and Portable formats, with sleek black or white finishes.



Specifications	
Keyboard	88 hammer keyboard.
Display	15 " capacitive touch screen.
Cabinet	baby grand model. black polished finish. Key cover
Polyphony	216 notes, multitimbral.
Controls	4 Dynamic curves. Aftertouch. Portamento. Legato Mono_Poly. Transposer +/- 24. Octave +/- 2. Expr. Pedal with 6 curves.
Factory Sounds	3 stereo new Grand Piano Voices. N.D.R (Natural Damper Resonance). Pedal Sustain soft. sostenuto, sustain. 10 Voice groups: Piano, Strings, Organ, Brass, Sax, Pad, Synth, Guitar, Bass, Ethnic. 464 Preset Voices. Voice 1, Voice 2, each Voice with up to 3 different sounds. Drawbars. Factory Advanced Voice Editing. High quality multilayer Sounds with a vast selection of Real Solos ®. Factory overwrite and restore. Up to 1.280 User Voices available. Arabic scale and key shift programmable per Voice.
User Sounds	2,5 GB free storage in non-volatile Flash memory (1,5 GB for additional Factory Sound Banks - 1 GB for User samples). Sample Editor: up to 228480 samples (mono, usable 8192, max 6 seconds per sample). Up to 4 layered stereo instruments (Voice or Drum Set). Advanced editor with Split, Octave, Level, Range, Tune, Cut off, Velocity, Adsr. Sample Loop utilities. User Drum kits.
Adsr/Filter	Separate sound controls for Attack, Decay, Sustain, LFO, Cut Off and Resonance.
Drum Set	62 Stereo Drums kits. 32 User Drum kits with Remap, Filter, Tune, FX controls. Drum Mixer: 9 sections with separate controls for level, pan, reverb, pitch, velocity compression. 86 Midi Drum styles (Pattern) available on Grv1_Loop section.
Drawbars	9 digital drawbars. Slow-Fast Rotor. Overdrive, Click, Vibrato, Reverb, Percussion. Full EDITING. 24 Organ Presets. Twin Organ: possibility to mix PCM and Digital organ tones for a wide stereo sound reproduction.
Arranger	Over 500 Styles. Real Styles, featuring a mix of Midi and audio parts (see below), Live and Midi Styles. 10 groups: Ballad, Pop, Dance, Rock, Swing, Latin, Country, Folk, Party, Unplugged. 3 Intro, 3 Ending, Fill to End, ABCD, 4 Fills, 4 Break. Reintro, Count In, Pause, Key Start, Key Stop, Variation. User Styles with unlimited store capabilities. 5 Midi Chords and Bass. Close, Parallel, Logic mode. 3 x Lower with Mono/Poly function. Chord Variation. Varitone. Voice to ABCD. Auto Fill, Fill to Arrange, Fill to Aftertouch. Chord modes: Easy1, Easy2, Easy3, Fingered 1, Fingered 2. Orch. Variation Morphing. Rootless mode. Manual Bass, To Lowest, To Root. Bassist and Pianist mode (Standard/Expert). Bass and Chord Lock.
Live Drums	580 Live Drums with a complete Arranger structure (3 Intros, 3 Endings, ABCD, 4 Fills, 4 Breaks). Reverb and 3 band Parametric Equalizer with 10 presets, programmable on each style. Drum Boost. Possibility to load external User Live Drums. Drum Lock.
Grooves	3 x independent Groove sections. Huge library of more than 780 Latin percussions, Electro and Acoustic Drum loops, Single percussion hits. Groove to Variation. Separate volume and EFX controls.
Live Guitars	216 sliced Guitar patterns including Long Chords. Separate volume and EFX controls.
Real Chord	More than 300 Real audio accompaniments covering a full chord range (up to 13 different chords). A wide variety of electric, acoustic, and jazz guitars patterns and other orchestral sequences perfectly synchronized to Midi. Dedicated Insert EFX with full editor, programmable for each style. Possibility to load external User Real Chords.
Real Bass	256 Real audio Bases synchronized to Midi. Twin Bass: possibility to switch Midi or Audio on the same style. Support to external User audio Bases. 3 band Parametric Equalizer with 10 Presets, programmable on each style. Possibility to load external User Real Bases.
Style Modeling	Navigate and choose Drums, Grooves, Bass and Chords from the massive Midi and Audio Library. Multichord and Multibass templates.
Style Edit	Advanced pattern recording and editing. Copy, Quantize, Velocity, Octave functions. Special quantize available for oriental styles (7/8, 9/8, 13/8, etc.).
Registrations	4 Banks with unlimited Registrations controlling the global set up of the instrument.
Performance	Provides fast access to Styles, Registrations with Style, Mp3, Wav or Midi files. 7 Sets with unlimited file storage.
Play Mode	Master, Accord/Style, Accord/Classic, Organist.
Phrase	Real time recording and play for Style chord sequences.
Footswitch	4 programmable Set. Assignable to the most relevant instrument functions and features.
Arabic Scale	16 sets. 6 scale memories.
Dsp	Reverb, Chorus, Phaser, Flanger, Overdrive, Distortion, Tremolo, Autopan, Equalizer. 2 stereo EFX Insert assigned to Voice and Voice 2, 1 Insert to Arranger chords, 1 Insert to Real Chord. 64 Single Presets and 64 Chain Effects. Deep editing.
Stem	4 Scenes. 5 audio tracks per scene to be played simultaneously. Lead track, Transpose, Time Stretching, Loop, Solo, Mute, Autoplay. Fixed pitch for Drum section. Support for external User Stems.
Player	2 separate Player units feat. Transpose, Audio Time stretching, GM, Jukebox, Playlists, Drum Remix, Markers, Lyrics, Cross Fade, Search, PFL, Midi Mix, Karaoke Backgrounds. Support for wav, midi, mp3, mp4, avi, mov, flv, cdg, jpg, png, txt and pdf files.
HD Recording	1 stereo audio track. Midi and Song Style recording.
K_Tune	wav files assignable to the keys
Audio Multitrack	5+1 audio tracks.
Inputs	1 Micro input (combo XLR) with phantom power (48V) and with gain control. Effect with Reverb, Delay, Equalizer, Pitch shift. Second Input (TRS) for microphone, line and instrument level signals with volume and reverb control.
Voicetron	3 voice vocalizer. Assignable to Arranger or Midi file with Presets, Equalizer, Mode functions.
Video	HDMI connection for displaying lyrics, pictures, and videos (up to Full HD Resolution). Remote control via HDMI (1280x720 Resolution capable screen is required).
Bluetooth	Streaming audio input (ad2p profile).
Remote control	Remote control via VNC (Wi-Fi direct, LAN direct or LAN DHCP) or via HDMI. Connection mode led on front panel and connection mode switches on rear panel.
Wi-Fi	Remote control via VNC (Wi-Fi direct).
LAN	Remote control via Ethernet cable (direct connection or DHCP).
Storage	240 GB internal SSD disk (80 GB reserved for System). Optional external SD Card (up to 512 GB).
Front Connections	Headphones, Input, Micro with direct output.
Rear Connections	Main Out Left / Right. Sustain pedal. Volume pedal. Footswitch. Midi In1, Midi In2, Out, Thru, 2 x USB device. USB Host. HDMI, Ethernet
Optional	Volume pedal normal or deluxe. Sustain pedal normal or piano type (available also with Footswitch connector). Footswitch 6 or 13 switches. Midi Pedalboard 13 notes (K8).

EVP 2



Specifications	
Keyboard	88 hammer keyboard.
Display	15 " capacitive touch screen.
Cabinet	Upright model, white finish, Key cover.
Polyphony	216 notes, multitimbral.
Controls	4 Dynamic curves. Aftertouch. Portamento. Legato Mono_Poly. Transposer +/- 24. Octave +/- 2. Expr. Pedal with 6 curves.
Factory Sounds	3 stereo new Grand Piano Voices. N.D.R (Natural Damper Resonance). Pedal Sustain soft. sostenuto, sustain. 10 Voice groups: Piano, Strings, Organ, Brass, Sax, Pad, Synth, Guitar, Bass, Ethnic. 464 Preset Voices. Voice 1, Voice 2, each Voice with up to 3 different sounds. Drawbars. Factory Advanced Voice Editing. High quality multilayer Sounds with a vast selection of Real Solos ®. Factory overwrite and restore. Up to 1.280 User Voices available. Arabic scale and key shift programmable per Voice.
User Sounds	2,5 GB free storage in non-volatile Flash memory (1,5 GB for additional Factory Sound Banks - 1 GB for User samples). Sample Editor: up to 228480 samples (mono, usable 8192, max 6 seconds per sample). Up to 4 layered stereo instruments (Voice or Drum Set). Advanced editor with Split, Octave, Level, Range, Tune, Cut off, Velocity, Adsr. Sample Loop utilities. User Drum kits.
Adsr/Filter	Separate sound controls for Attack, Decay, Sustain, LFO, Cut Off and Resonance.
Drum Set	62 Stereo Drums kits. 32 User Drum kits with Remap, Filter, Tune, FX controls. Drum Mixer: 9 sections with separate controls for level, pan, reverb, pitch, velocity compression. 86 Midi Drum styles (Pattern) available on Grv1_Loop section.
Drawbars	9 digital drawbars. Slow-Fast Rotor. Overdrive, Click, Vibrato, Reverb, Percussion. Full EDITING. 24 Organ Presets. Twin Organ: possibility to mix PCM and Digital organ tones for a wide stereo sound reproduction.
Arranger	Over 500 Styles. Real Styles, featuring a mix of Midi and audio parts (see below), Live and Midi Styles. 10 groups: Ballad, Pop, Dance, Rock, Swing, Latin, Country, Folk, Party, Unplugged. 3 Intro, 3 Ending, Fill to End, ABCD, 4 Fills, 4 Break. Reintro, Count In, Pause, Key Start, Key Stop, Variation. User Styles with unlimited store capabilities. 5 Midi Chords and Bass. Close, Parallel, Logic mode. 3 x Lower with Mono/Poly function. Chord Variation. Varitone. Voice to ABCD. Auto Fill, Fill to Arrange, Fill to Aftertouch. Chord modes: Easy1, Easy2, Easy3, Fingered 1, Fingered 2. Orch. Variation Morphing. Rootless mode. Manual Bass, To Lowest, To Root. Bassist and Pianist mode (Standard/Expert). Bass and Chord Lock.
Live Drums	580 Live Drums with a complete Arranger structure (3 Intros, 3 Endings, ABCD, 4 Fills, 4 Breaks). Reverb and 3 band Parametric Equalizer with 10 presets, programmable on each style. Drum Boost. Possibility to load external User Live Drums. Drum Lock.
Grooves	3 x independent Groove sections. Huge library of more than 780 Latin percussions, Electro and Acoustic Drum loops, Single percussion hits. Groove to Variation. Separate volume and EFX controls.
Live Guitars	216 sliced Guitar patterns including Long Chords. Separate volume and EFX controls.
Real Chord	More than 300 Real audio accompaniments covering a full chord range (up to 13 different chords). A wide variety of electric, acoustic, and jazz guitars patterns and other orchestral sequences perfectly synchronized to Midi. Dedicated Insert EFX with full editor, programmable for each style. Possibility to load external User Real Chords.
Real Bass	256 Real audio Bases synchronized to Midi. Twin Bass: possibility to switch Midi or Audio on the same style. Support to external User audio Bases. 3 band Parametric Equalizer with 10 Presets, programmable on each style. Possibility to load external User Real Bases.
Style Modeling	Navigate and choose Drums, Grooves, Bass and Chords from the massive Midi and Audio Library. Multichord and Multibass templates.
Style Edit	Advanced pattern recording and editing. Copy, Quantize, Velocity, Octave functions. Special quantize available for oriental styles (7/8, 9/8, 13/8, etc.).
Registrations	4 Banks with unlimited Registrations controlling the global set up of the instrument.
Performance	Provides fast access to Styles, Registrations with Style, Mp3, Wav or Midi files. 7 Sets with unlimited file storage.
Play Mode	Master, Accord/Style, Accord/Classic, Organist.
Phrase	Real time recording and play for Style chord sequences.
Footswitch	4 programmable Set. Assignable to the most relevant instrument functions and features.
Arabic Scale	16 sets. 6 scale memories.
Dsp	Reverb, Chorus, Phaser, Flanger, Overdrive, Distortion, Tremolo, Autopan, Equalizer. 2 stereo EFX Insert assigned to Voice and Voice 2, 1 Insert to Arranger chords, 1 Insert to Real Chord. 64 Single Presets and 64 Chain Effects. Deep editing.
Stem	4 Scenes. 5 audio tracks per scene to be played simultaneously. Lead track, Transpose, Time Stretching, Loop, Solo, Mute, Autoplay. Fixed pitch for Drum section. Support for external User Stems.
Player	2 separate Player units feat. Transpose, Audio Time stretching, GM, Jukebox, Playlists, Drum Remix, Markers, Lyrics, Cross Fade, Search, PFL, Midi Mix, Karaoke Backgrounds. Support for wav, midi, mp3, mp4, avi, mov, flv, cdg, jpg, png, txt and pdf files.
HD Recording	1 stereo audio track. Midi and Song Style recording.
K_Tune	wav files assignable to the keys
Audio Multitrack	5+1 audio tracks.
Inputs	1 Micro input (combo XLR) with phantom power (48V) and with gain control. Effect with Reverb, Delay, Equalizer, Pitch shift. Second Input (TRS) for microphone, line and instrument level signals with volume and reverb control.
Voicetron	3 voice vocalizer. Assignable to Arranger or Midi file with Presets, Equalizer, Mode functions.
Video	HDMI connection for displaying lyrics, pictures, and videos (up to Full HD Resolution). Remote control via HDMI (1280x720 Resolution capable screen is required).
Bluetooth	Streaming audio input (ad2p profile).
Remote control	Remote control via VNC (Wi-Fi direct, LAN direct or LAN DHCP) or via HDMI. Connection mode led on front panel and connection mode switches on rear panel.
Wi-Fi	Remote control via VNC (Wi-Fi direct).
LAN	Remote control via Ethernet cable (direct connection or DHCP).
Storage	240 GB internal SSD disk (80 GB reserved for System). Optional external SD Card (up to 512 GB).
Front Connections	Headphones, Input, Micro with direct output.
Rear Connections	Main Out Left / Right. Sustain pedal. Volume pedal. Footswitch. Midi In1, Midi In2, Out, Thru, 2 x USB device. USB Host. HDMI, Ethernet
Optional	Volume pedal normal or deluxe. Sustain pedal normal or piano type (available also with Footswitch connector). Footswitch 6 or 13 switches. Midi Pedalboard 13 notes (K8).

ACCESSORIES and AMPLIFICATION

MONITOR	31
AMPLIFICATION	32
STAND	35
POWER SUPPLY	35
PEDALS	36
HARD CASES	38
DELUXE HARD CASES	39
BAGS	40
LIBRARY & SOFTWARE	41

ACCESSORIES

MONITOR



Code: 9MO001 - MONITOR 15,6" TOUCH SCREEN

Screen Size: 15.6-inch

Resolution: 1920x1080

Contrast: 45% NTSC

Viewing Angle: Full View

Speaker: 8Ω/1W

Size: 354x218x5~9mm

Panel: IPS Screen

Brightness: 250cd/m²

Refresh Rate: 60Hz

Net Weight: 697g

Port: Type-C 3.1 Port, Type-C Fast Charging Port, Mini Hdmi Port

AMPLIFICATION

KB SERIES

The new KB Series studio monitor is designed for use as a near-field loudspeakers. Engineered to the highest sonic standards. KB Series monitors address the needs of professional users in recording, mixing, broadcast, post-production and mastering. The drivers have been adapted to one other using acoustic simulation and a large series of measurements. Thanks to its new waveguide design, and to the acoustic controls for bass, low-mid and high frequencies, the KB Series bring a new benchmark in audio reproduction quality. Two versions are available with wide range of bass, mid and treble acoustic switch and carrying built-in DSP with large LCD display. Both versions are developed to be used in diverse acoustical conditions, with any source equipment.



KB5A - ACTIVE STUDIO MONITOR

Titanium Driver: 1" Neodymium Soft Dome
Woofer: 5" Paper Cone Rubber Edge
Frequency Range: 48Hz - 20kHz
Line Input: XLR & 1/4" TRS
LED: Front LED Control
AMP: Built-in efficient Class D power amp
LCD: Onboard LCD visual DSP-driven EQ
EQ: 25 visual Graphic EQ settings for different environments
RMS Power: 80W
Power Voltage: AC100V - AC240V
Dimensions(WxDxH): 185x250x300mm
Net Weight(Kg): 4.65

KB6A - ACTIVE STUDIO MONITOR

Titanium Driver: 1" Neodymium Soft Dome
Woofer: 6.5" Paper Cone Rubber Edge
Frequency Range: 45Hz - 20kHz
Line Input: XLR & 1/4" TRS
LED: Front LED Control
AMP: Built-in efficient Class D power amp
LCD: Onboard LCD visual DSP-driven EQ
EQ: 25 visual Graphic EQ settings for different environments
RMS Power: 120W
Power Voltage: AC100V - AC240V
Dimensions(WxDxH): 225x289x360mm
Net Weight(Kg): 6.25

AMPLIFICATION



KS10A - ACTIVE SUB WOOFER

Woofer: 10" Paper Cone Rubber Edge

Frequency Range: 40Hz - 150Hz

Line Input: XLR & 1/4" TRS

Line Output: XLR

AMP: Built-in efficient Class D power amp

X-OVER: 70Hz, 80Hz, 90Hz, 100Hz

Phase: 0/180°

RMS Power: 250W

Power Voltage: AC120V & AC230V

Dimensions(WxDxH): 350x390x372mm

Net Weight(Kg): 14

AMPLIFICATION

KM6

The item can be powered by various devices: computer/ mobile power supply/charger. DC=5V power supply design, suitable for mobile power use, convenient for entertainment at the outdoor such as wild field, beach and other places without AC power. Small in size and light in weight, easy to handle when bringing it cut. Built-in effect/MP3/Bluetooth/USB Disk for playback and recording. Stereo channel inputs with high and low sensitivity switch selectable. Use venues: online live streaming, recording, karaoke, home entertainment, conference rooms, outdoor performances.



KM6

- 2 mono inputs and 2 stereo input.
- All microphone channels have a +48V phantom power and independent 3 band EQ.
- Built-in MP3/U disk/Bluetooth playback and recording function.
- Built-in reverb and echo effects with reverb delay function
- Independent effect control potentiometers for each channel.
- Stereo channels with high and low gain select switches.
- Main output volume is controlled by a low-noise fader with 45mm.
- 6 output (MAIN L/R, FX OUT, PHONES, CONTROL ROOM L/R).
- Balanced output +26dB (balanced).
- Each channel has an independent peak indicator light.
- With TYPE-C and DC socket, different adapter plugs can be used, adapting.
- To power a variety of device: computer, charger, mobile power and so on.

MIC Input: 2
LINE Input: 2
Stereo Input: 1
Frequency Response (+1/-1dB): 20Hz-20KHz
Distortion: 0.05%
SNR: >80dBu

Equivalent Noise: -128dBu
MAIN OUT(Balanced Output): +26dBu
MP3 Player: SD/USB/BT
DSP Effector: 24 kinds/can adjust the time
Power Supply: DC=5V

STAND AND POWER SUPPLY



Code: 9SU005

FOR EVENTX

Code: 9SU006

FOR EVM



Code: 1ALGST40A09

9V 40W FOR EVENT61, EVENT
CHROM, EVENT X, EVM, EVENT

PEDALS



Code: 9AC092

EFFECTS PEDAL FS1 PIANO TYPE



Code: 9AC114

SUSTAIN PEDAL PIANO TYPE



Code: 9PE002

**SUSTAIN PEDAL PIANO TYPE
FOR DIGITAL PIANOS**



Code: 9PE003

**PEDAL 3 SWITCHES FOR
DIGITAL PIANOS**



Code: 9AC089

EFFECTS PEDAL FS1



Code: 9PE007

SUSTAIN PEDAL



Code: 9PE005

**SUSTAIN PEDAL FOR
DIGITAL PIANOS**



Code: 9PE010

VOLUME PEDAL



Code: 9PE006

DELUXE VOLUME PEDAL



Code: 9AC103

EFFECTS PEDAL FS6



Code: 9AC093

EFFECTS PEDAL FS13



Code: 9PEMK8

MIDI PEDALBOARD 13 NOTES K8

HARD CASES



Code: 9VA016

HARD CASE FOR EVENTX, SD90



Code: 9VA018

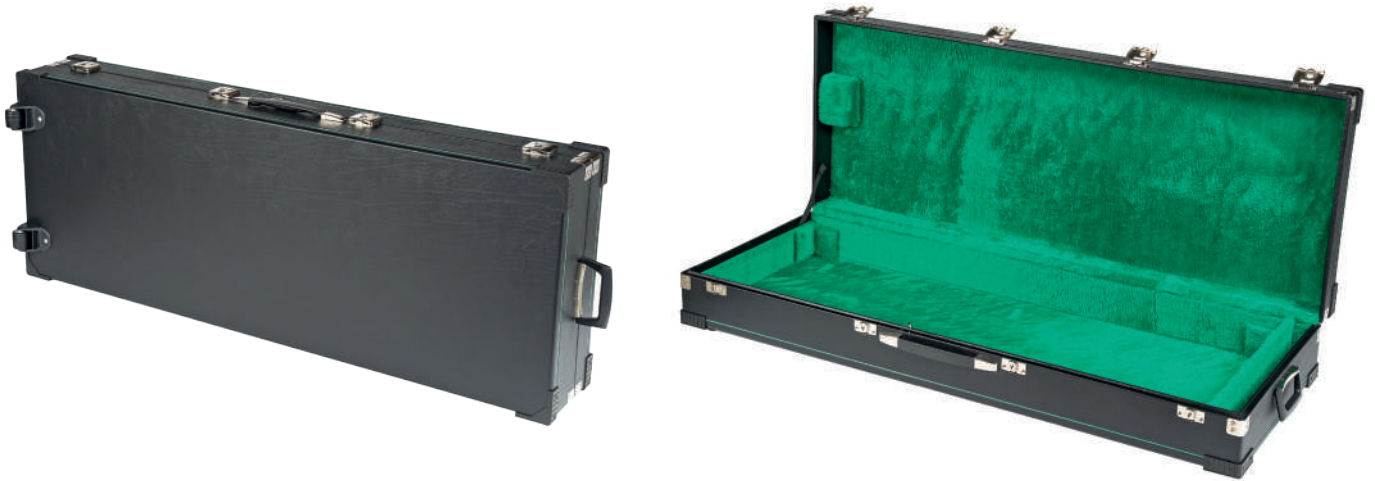
FOR EVENT
(with power supply/music stand housing)



Code: 9VA019

FOR EVENT61/CHROM/FUSION
(with power supply/music stand housing)

DELUXE HARD CASES



Code: 9VA018D

**DELUXE HARD CASE FOR EVENT
(with power supply/music stand housing)**

Code: 9VA019D

**DELUXE HARD CASE FOR EVENT61/EVENT CHROM/ FUSION
(with power supply/music stand housing)**



BAGS



Code: 9B0001

BAG FOR EVS



Code: 9B0003

BAG FOR KEYBOARD 76 KEYS

Code: 9B0004

BAG FOR KEYBOARD 61 KEYS



Code: 9B0010

BAG FOR EVENTX



Code: 9B0011

BACKPACK

LIBRARY & SOFTWARE

Styles	
CODE	DESCRIPTION
9KS001	REAL STYLE SUPER DISCO
9KS002	REAL STYLE 80s DISCO DANCE
9KS003	REAL STYLE ACOUSTIC SAMBA
9KS004	REAL STYLE BOSSA MANOUCHE
9KS005	REAL STYLE CLASSIC BOSSA
9KS006	REAL STYLE CUMBIA NUEVA
9KS007	REAL STYLE DISCO CHA
9KS008	REAL STYLE FAST MANUCHE
9KS009	REAL STYLE FRENCH WALTZ
9KS010	REAL STYLE GUITAR SLOW
9KS011	REAL STYLE LINE DANCE CUMBIA
9KS012	REAL STYLE MEDIUM JAZZ
9KS013	REAL STYLE RHUMBA FLAMENCA
9KS014	REAL STYLE SALLON HARP-B
9KS015	REAL STYLE SAX DISCO LOUNGE
9KS016	REAL STYLE URBAN REGGAE
9KS017	LIVE STYLE EURO DANCE
9KS018	LIVE STYLE FRIDAY'S PARTY
9KS019	LIVE STYLE HELENE HIT
9KS020	LIVE STYLE PARTY WALTZ
9KS021	LIVE STYLE POP LEBEN
9KS022	REAL STYLE DANCE ROOM

Styles	
CODE	DESCRIPTION
9KS023	REAL STYLE KIZOMBA
9KS024	LIVE STYLES POP
9KS025	REAL STYLE ATLANTIS
9KS026	REAL STYLE BROOKLYN
9KS027	REAL STYLE CREOLE
9KS028	REAL STYLE JAZZ SAMBA
9KS029	REAL STYLE MADISON-R
9KS030	REAL STYLE SMOOTH JAZZ-R
9KS031	REAL STYLE SOUL TRAP
9KS032	REAL STYLE TENOR CHA CHA-R
9KS033	REAL STYLE AFTER LOVE_F
9KS034	REAL STYLE BORN TO BE_D-R
9KS035	REAL STYLE EVERY BREATH_A
9KS036	REAL STYLE EYE SKY_Bm
9KS037	REAL STYLE FREAK_Am-R
9KS038	REAL STYLE GOOD T_Em-R
9KS039	REAL STYLE ILLUSION_Gbm-R
9KS040	REAL STYLE LE MANI_E
9KS041	REAL STYLE VOCAL_FREAK_Am-R
9KS042	REAL STYLE YOU & I_Bm-R
9KS043	REAL STYLE YOU CAN LEAVE_C

The Style Library is constantly developing and will be updated periodically

EVENT Series - Sound & Style Upgrade

Sounds

New added GM sounds and Preset Voices.

Piano: Grand Piano, Pop Bright, Jazz Piano, Soft Grand, Rock Piano & Pad, Smooth Rhode, Fm Piano, Fm Layer, Glassy Piano, Rd-1000.

Strings: Marcato 2, Analog String.

Brass: Brass Swell, Synbrass 6.

Synth: Boreal, Synth Bell, Neo Synth, Pikes, Metal Sticks, Synth Ensemble, Short 11.

Pad: Sweet Pad, Neo Pad 1, Neo Pad 2.

Organ: Drawbar 16, 8, 5 1-3, 4. Distorted. Overdrive.

Accordion: Master 2

Flute: Peruvian

Bass: Synbass 13

Efx: New special effects selection.

Improved Parameters, Balance and Patches on orchestral Sounds and Drum Sets.

Signal noise corrected on Pianissimo samples.

Articulation noise effects reduced on Electric Pianos, Guitars and Saxes.

Improved the GM compatibility. Better balance and coherence between the orchestral parts.

New Global Reverb and Global Chorus controls added on the GM main page.

Various: Reverb: Theatre 40. New Rotor parameters. Dial Speed: 10. Headphone level: 100.

Styles

Factory Styles with a new balance. 22 extra Styles added. Live Guitars revised and improved.

Our models are trade mark registered by copyright.
It is strictly forbidden any partial or complete copy of this catalogue.

ALL PRODUCTS ARE ENGINEERED IN ITALY.

KETRON s.r.l.

Via Taliercio, 7
60131 - Ancona - Italy
ph. +39 071 285 771
ketron@ketron.it
www.ketron.it

Graphic Design:
Sara Manini
Simoncini Studio

Photo:
Franco Simoncini

Printing January 2025

